

MONTHLY MEMBERSHIP PROGRESS REPORT

District 26 M6

Results as of: 3/31/2020

GMT:

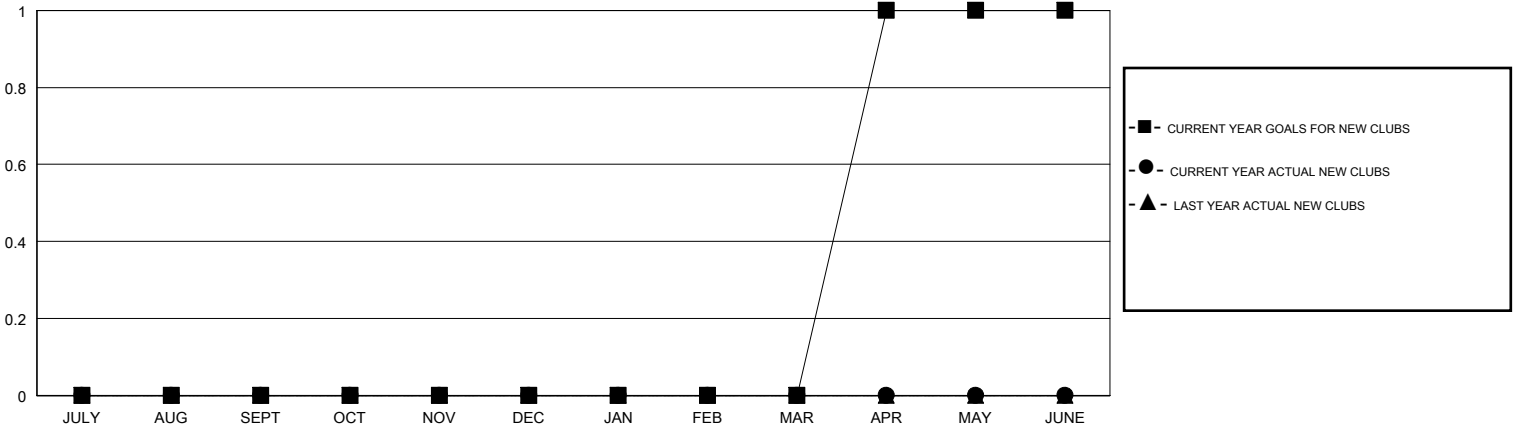
LOCATION MISSOURI

GMT CA

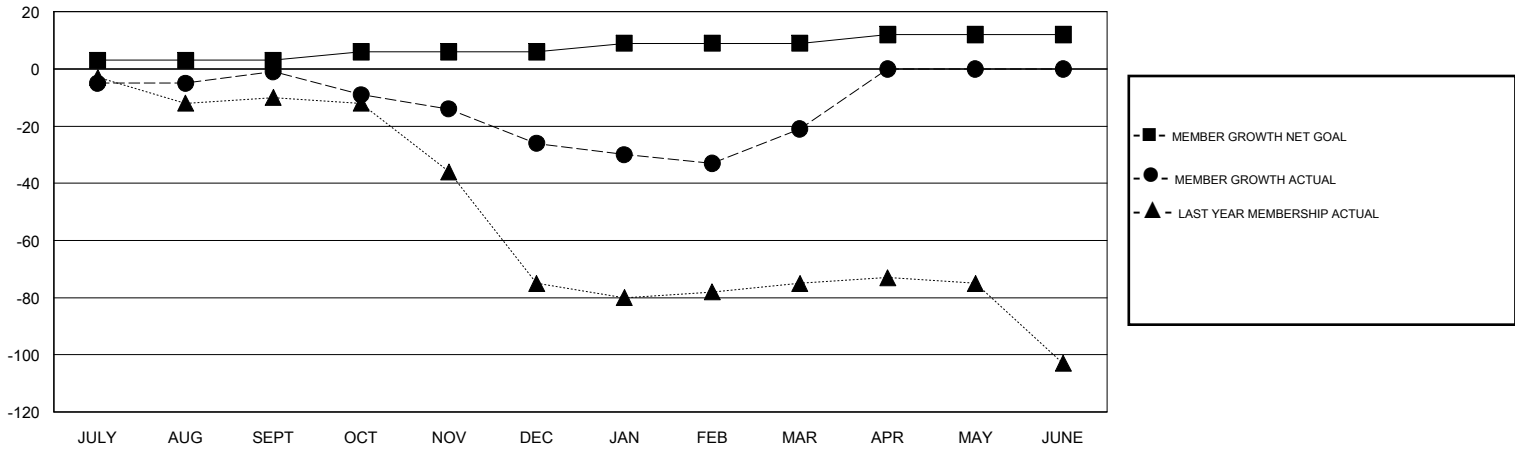
Clubs			
RESULTS FOR 2019-2020			
QUARTER	NEW CLUB GOAL	NEW CLUBS	DROPPED CLUBS
JULY/AUG/SEPT	0	0	1
OCT/NOV/DEC	0	0	0
JAN/FEB/MAR	0	0	0
APR/MAY/JUNE	1	0	0

Members			
RESULTS FOR 2019-2020			
QUARTER	MEMBER GROWTH NET GOAL	MEMBER GROWTH ACTUAL	DROPPED MEMBERS ACTUAL (including transfers)
JULY/AUG/SEPT	3	20	17
OCT/NOV/DEC	3	11	34
JAN/FEB/MAR	3	29	18
APR/MAY/JUNE	3	0	0

GOALS AND ACTUAL NEW CLUBS CUMULATIVE



GOALS AND ACTUAL MEMBERS CUMULATIVE



DROPPED CLUBS: 1	17 CLUBS OF 41 ADDED 1 OR MORE NEW MEMBERS	<u>GENDER DISTRIBUTION</u> MALE 605 (66.56%) FEMALE 304 (33.44%)
<u>DROPPED MEMBERS</u> DECEASED 11 CLUB CANCELLED 0 OTHER 58 <hr/> TOTAL 69	CLICK HERE FOR CUMULATIVE MEMBERSHIP DATA	TOTAL FAMILY UNIT MEMBERS 169 FAMILY MEMBERS PAYING HALF DUES 85